



WESTERN SYDNEY  
UNIVERSITY

# 2025 HAWKESBURY SHOW

9<sup>th</sup> – 11<sup>th</sup> May 2025



## BEEF CATTLE SCHEDULE

### Hoof and Hook Competition

### Inaugural Southern Steer Showcase

**\*\* Prizemoney for Breed Champions & Reserves and Interbreeds. \*\***

**CHIEF STEWARD:** Jordan Ridge

**STEWARDS:** Angela McGrath, Brooke Chandler, Jill Burgess, Beth Simmonds, Molly Simmonds, Madison Luke, Katherine Mann, Shannon Lawlor, Eliza Babazogli, Andrew Scarsbrook, Alex Holm and Jack Mayhew

#### Gate Fee:

(i) \$10 per exhibitor and \$10 for each person in the vehicle accompanying the exhibitor – must enter through Gate 3 – **PURCHASE TICKETS ONLINE WITH CLASS ENTRIES**

(ii) **SCHOOL EXCURSION GROUPS** on Friday \$5.00 per student/teacher.

Group Tickets **MUST** be pre-purchased from [www.hawkesburyshowground.com.au](http://www.hawkesburyshowground.com.au) – Group ticket holders must enter the showground in their respective group

**PLEASE NOTE: THE NEW CHANGES TO BUMP IN/BUMP OUT TIMES; EXHIBITORS WILL BE ASKED TO STRICTLY FOLLOW THESE NEW RULES**

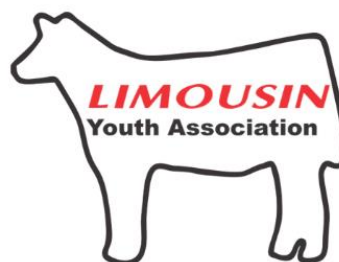
#### Bump in/Bump out

Vehicles off the grounds by 8.30am

All exhibits must remain on display and will not be permitted to leave the exhibit area until after 4.30pm each day



**HEREFORDS**  
Australia  
Sydney  
Regional Group



## **SUMMARY OF EVENTS:**

**\*\*\*\* Please note DAYS AND TIMES of judging (Subject to Change)\*\*\*\***

### **Friday 9<sup>th</sup> May**

<b><u>Time</u></b>	<b><u>Event</u></b>
<b>10.00am</b>	Educational Events
<b>1.00pm</b>	Judging Talk and Techniques
<b>2.00pm</b>	Junior Judging Classes
<b>3.00pm</b>	Team Fitting Challenge
<b>4.00pm</b>	Junior Judging Oral Talks
<b>5.30pm</b>	Bull Jackpot
<b>6.30pm</b>	Heifer Jackpot
<b>7.00pm</b>	Charity Auction ( Main Arena )

### **Saturday 10<sup>th</sup> May**

<b><u>Time</u></b>	<b><u>Event</u></b>	<b><u>Event</u></b>
	<b><u>Ring 1 ( Road )</u></b>	<b><u>Ring 2 ( Shed )</u></b>
<b>8.30am</b>	Tropical Breeds European Breeds	Small Breeds British Breeds
<b>11.00am</b>	Interbreed	
<b>12.30pm</b>	Lunch	
<b>1.00pm</b>	Grand Parade	
<b>1.30pm</b>	Paraders ( Juniors followed by Seniors )	
<b>4.30pm</b>	Presentation	
<b>5.00pm</b>	Departure	

### **Sunday 11<sup>th</sup> May**

<b><u>Time</u></b>	<b><u>Event</u></b>
<b>7.00am</b>	Weighing of all steers/heifers
<b>8.30am</b>	Judging of Best School Exhibit
<b>9.00am</b>	Judging of Non kill class and Hoof/Hook Led
<b>10.00am</b>	Judging of Hoof and Hook Unled
<b>11.00am</b>	Judging of Southern Steer Showcase Led
<b>12.00pm</b>	Judging of Southern Steer Showcase Unled
<b>1.00pm</b>	Live Auction for Southern Steer Showcase
<b>2.30pm</b>	Presentation
<b>3.00pm</b>	Departure

## **ENTRY FEE:**

Stud Cattle/Non - Kill Class - \$15.00 per class

Bull & Heifer Jackpot - \$30.00 per entry

Team of 3 Fitting Challenge - \$15.00 per team

Juniors Paraders and Junior Judging- \$5.00 per class. **Pre-entry ONLINE or VIA MAIL only**

Southern Steer Showcase - \$125.00 per entry

Prime Beef Steer/Heifer Hoof and Hook Competition - \$60.00 with optional \$25.00 to enter  
Jackpot Carcase

## **NO ENTRIES WILL BE ACCEPTED ON THE DAY**

1. **ENTRIES ONLINE:** at [showday.online](http://showday.online) – **CLOSE: MONDAY 28<sup>th</sup> APRIL at 6.00PM.**

**Payment of Class Entry Fees is by Credit Card only when entering Online.**

**ENTRIES CLOSE:** by POST or at Showground: **MONDAY 28<sup>th</sup> APRIL BY 6.00PM.** Payment can be made by Cheque (to Hawkesbury District Agricultural Association), Credit Card or Cash ONLY. CASH not accepted through mail.

2. **LATE ENTRIES WILL NOT BE ACCEPTED**

3. **PRIZE MONEY:** Prize money won during the Show will be paid by Electronic Funds Transfer (EFT) to the account details provided to the Chief Steward during the show. If the bank details are incomplete or incorrect the Association will take all reasonable efforts to contact prize winners to confirm payment details. The Association seeks to finalise all prize money payments by the end of April. Queries regarding unpaid prize money can be addressed to the Show Office by email at [info@hawkesburyshow.com.au](mailto:info@hawkesburyshow.com.au)

**SPONSORS:** Thanks to the following major sponsors:

**Western Sydney University**

**Redbank Estate**

**AgriWest, Windsor**

**Laing and Simmons Real Estate**

**Sciberras Produce and Stockfeeds**

**International Animal Health**

**Limousin Youth Association**

**Sydney Regional Hereford Group**

**The Cattle Shop**

**P. D. R. Mitchell memorial perpetual trophy**

**B.J. Baker memorial perpetual trophy**

**J & C Adams Transport**

**Picton Wholesale Meats**

**Western Sydney Meat Worx**

## **PLEASE READ THE GENERAL TERMS & CONDITIONS:**

1. Breeds will be judged as per program European, British, Tropical and Small
2. Breed & Age MUST BE stated on entry form. **Age of cattle is at the 1<sup>st</sup> of May 2025**
3. No animal under 9mths of age to be entered in own classes – must be shown on cow
4. **Shedding of Cattle:** All Breeds to be on grounds by 6.30am on SATURDAY
5. All cattle must be prepared by 8.30am on the day of Judging and must remain until 4.30pm.
6. Exhibitors who have travelled over 150 kms can ask for an exemption from the above, please advise on entry form.
7. Bedding is **NOT** provided, please **SUPPLY YOUR OWN**.
8. All cattle must be free of infectious disease and have an NLIS device fitted, it will be scanned
9. **All bulls 12 months and over must have a nose ring.**
10. **All bulls under the age of 12 months are to be led with a bulldog grip.**
11. **Bulls must be adequately tended, to the steward's satisfaction, so as not to present a danger to the public.**
12. **All females must be led with a bull dog grip.**
13. The Committee's decision is final on all matters concerning the schedule and exhibition of cattle.  
The Chief Steward and committee reserve the right to refuse any entry to an animal that is unfit for exhibition and change/remove/merge classes.
14. All stock must be adequately supervised throughout the Show.
15. **Junior Judging will be held on Friday and Junior Paraders competition will be held on Saturday.**  
**Entries for these classes is pre-entry online or mail only; no entries will be taken on the day.**
16. **The following is to be provided with each entry:**
  - Breed certificate for each animal entered.  
  
(All cattle, except commercial, must be registered with the appropriate Breed Society and Exhibitors must abide by the Rules & Regulation of the relevant Breed Society).
  - Health certificate for property when animals are located.
  - Pesti-virus test for each animal entered.  
  
Please forward the above information by either scanning or emailing to [info@hawkewsburyshow.com.au](mailto:info@hawkewsburyshow.com.au) by 4.00pm Monday 28<sup>th</sup> April 2025 or mail hard copies with entry form to be received at the Office by 6.00pm Monday 28<sup>th</sup> April 2025.
  - **Please advise on the entry form:**
    1. if you will be arriving on Friday,
    2. if you wish to be stalled next to a particular exhibitor.
    3. for an entry pass for transport carrier (see Note 7 below)

- **All persons in the Cattle area, exhibitors or passive helpers are required to complete a “Risk Warning” Indemnity / Waiver document.** This form should be downloaded from the Hawkesbury Show website or printed from the attachment and forward with abovementioned documents. Otherwise, it MUST be completed at the Cattle Office as soon as persons arrive on the Showground. A wrist band will be provided when the Waiver is submitted and must be worn when involved in any cattle activities including Junior Paraders. If under 18 years of age a parent or guardian will need to sign the form.
- **Grand Parade:** All Saturday ribbon winners must enter the Grand Parade at 1.00pm on Saturday. All Exhibitors are encouraged to showcase their animals by participating in the Grand Parade, **a cash prize of \$100 for “Best Cattle Exhibit on Parade”** will be on offer.
- **Transport Carriers**  
To facilitate the **free** entry of stock transport carriers into the Showground, exhibitors must apply, as part of the entry process, for an entry pass for their transport carrier. Details of the carrier and what dates they will be dropping off and collecting cattle needs to be stated as the gate passes will be bar-coded & date sensitive. Passes will be posted to you as the exhibitor and it is your responsibility to get them to your carrier. Without these passes the carriers will need to pay to enter the Showground so please make sure you organize these at the time of placing your entries.  
**All carriers are to enter the Showground through Gate 3 and leave immediately after unloading animals.**
- Please be considerate by allowing all possible exhibitors to be housed under cover.
- Please read through the ‘Rules and Regulations of the Association’ by clicking on the following link: <http://www.hawkesburyshow.com.au/rules.pdf>

## **ANIMAL WELFARE POLICY**

***Hawkesbury District Agricultural Association (HDAA) provides for the welfare and treatment of animals on the showground. The expectations and requirements are for the care of animals and if exhibitors breach these conditions HDAA may take action if required through ejecting the involved exhibitor and/or reporting the incident to the RSPCA for appropriate action.***

An Exhibitor or Attendant of an Animal Exhibit must use all reasonable steps to ensure that the exhibit is housed and cared for in accordance with the Animal Welfare Policy. Please be mindful that there are public patrons watching you and your animals throughout the day.

Animal Welfare is a human responsibility that encompasses all aspects of animal wellbeing. This includes, but is not limited to:

4. Proper housing
5. Management
6. Nutrition
7. Responsible care
8. Humane handling, and
9. Veterinary treatment

**PRIZES** – unless otherwise specified:

Placings in all **Class Sections: First \$25, Second \$15 and Third \$10**

**All breed sections/interbreed**

10. Calf Champion Bull & Female - ribbon & \$25.00
11. Reserve Calf Champion Bull & Female - ribbon & \$15.00
12. Junior Champion Bull & Female - ribbon & \$25.00
13. Reserve Junior Champion Bull & Female - ribbon & \$15.00
14. Senior Champion Bull & Female – ribbon & \$25.00
15. Reserve Senior Champion Bull & Female – ribbon & \$15.00
16. Interbreed Calf Champion Bull – rosette & \$100.00
17. Interbreed Calf Champion Heifer – rosette & \$100.00
18. Interbreed Junior Champion Bull – rosette & \$100.00
19. Interbreed Junior Champion Heifer – rosette & \$100.00
20. Interbreed Senior Champion Bull – rosette & \$100.00
21. Interbreed Senior Champion Female – rosette & \$100.00
22. Interbreed Bull of the Show – ribbon & \$250.00
23. Interbreed Female of the Show – ribbon & \$250.00
24. Interbreed Supreme Exhibit of the Show – ribbon & \$500.00



# Interbreed Group Classes

**2050- Breeders Group** – 1 Male & 1 Female under 24 mths of age of 1 breed. Owned by the 1 exhibitor and must have been entered in the general classes.

**Champion** – rosette & \$50.00

**Reserve Champion** – rosette & \$25.00

**2051- Pair of Females** – under 24 mths, to be owned by the 1 exhibitor and must have been entered in the general classes.

**Champion** – rosette & \$50.00

**Reserve Champion** – rosette & \$25.00

**2052- Pair of Bulls** – under 24 mths, to be owned by the 1 exhibitor and must have been entered in the general classes.

**Champion** – rosette & \$50.00

**Reserve Champion** – rosette & \$25.00

**2053- Sires/Dams Progeny** - under 24 mths, 2 animals represented, to be owned by the 1 exhibitor and must have been entered in the general classes.

**Champion** – rosette & \$50.00

**Reserve Champion** – rosette & \$25.00

**2001- 1F. Interbreed Junior Bull Jackpot** Judging commences 5.30pm.

\$30.00 per entry ( no restrictions on the number of entries), Entrants **must be entered in a general class on Saturday** – net entry fee pool will be totally distributed as prizemoney - allocation to placegetters will be determined based on the number of entries in the class.

**Champion Bull Jackpot**

**Reserve Champion Bull Jackpot**

**2002- 2F. Interbreed Heifer Jackpot** Judging commences 6.30pm.

\$30.00 per entry (no restrictions on the number of entries), Entrants **must be entered in a general class on Saturday** – net entry fee pool will be totally distributed as prizemoney - allocation to placegetters will be determined based on the number of entries in the class.

**Champion Heifer Jackpot**

**Reserve Champion Heifer Jackpot**

**2003- 3F. Fitting Challenge** Judging commences 3.00pm.

\$15.00 entry fee per team: Team of 3 – Ages 8-30 years (Minimum 1 junior under 18 years per team).

Must be ready on rail of ring with animal prior to 3.00pm.

30 minutes to prepare animal ready for the Show Ring with leather halter and show cane. The animal used in class **must be entered in a general class on Saturday**

**Champion Fitting Team**

**Reserve Champion Fitting team**

**Saturday 10<sup>th</sup> May** - Judging commences 8.30am sharp.

**CLASSES (European, British, Tropical and Small)**

2011 -.Bull, 9 months & under 12 months

2012 -.Bull, 12 months & under 14 months

**CALF CHAMPION BULL**

**RESERVE CALF CHAMPION BULL**

2013 -.Bull, 14 months & under 16 months

2014- .Bull, 16 months & under 18 months

2015- .Bull, 18 months & under 20 months

**JUNIOR CHAMPION BULL**

**RESERVE JUNIOR CHAMPION BULL**

2016 - .Bull, 20 months & under 24 months

2017 - .Bull, 24 months & under 30 months

2018 - .Bull, 30 months and over

**SENIOR CHAMPION BULL**

**RESERVE SENIOR CHAMPION BULL**

2019 - .Female, over 9 months & under 12months

2020 - .Female, 12 months & under 14 months

**CALF CHAMPION HEIFER**

**RESERVE CALF CHAMPION HEIFER**

2021 - .Female, 14 months & under 16 months

2022 - .Female, 16 months & under 18 months

2023 -.Female, 18 months & under 20 months

**JUNIOR CHAMPION FEMALE**

**RESERVE JUNIOR CHAMPION FEMALE**

2024 - Female, 20 months & under 24 months

2025 - .Female, 24 months & under 30 months

2026 - .Female, 30 months and over.

**SENIOR CHAMPION FEMALE**

**RESERVE SENIOR CHAMPION FEMALE**



# **PRIME BEEF CATTLE**

## **HOOF & HOOK COMPETITION**

### **CONDITIONS OF ENTRY:**

1. The decision of Stewards on all matters pertaining of incidental to the competition shall be final and conclusive and binding on all nominations for the competition.
2. The Committee reserves unto itself the right at any time, without being liable, for any loss or damage which may be sustained.
3. Every care will be taken of the Exhibits, but the Committee will not be responsible for any damage, accident, loss or death.
4. All cattle must have a National Livestock Identification System (NLIS) device fitted & will be scanned
5. All Cattle must be pesti virus tested negative and results must be submitted with entries along with a health declaration
6. All exhibitors must sign & lodge a Risk Warning/Indemnity & Health Declaration (forms attached) All cattle must be free of infectious disease
7. All exhibits must have a management tag in order to identify them for judging
8. All cattle will be transported to Western Sydney Meat Worx ( PICTON ) upon completion of judging
9. All exhibits will be sold to Picton Wholesale meats over a current grid price for that week unless prior arrangements ( personal use ) have been organised
10. Open to all breeds or cross breeds of cattle.
11. All cattle entered in the hoof and hook competition shall not exceed the minimum and maximum live weight of 360 - 520kg, there will be a 5kg margin either way of allowance
12. Any cattle that exceed the weight limit will be moved into the Led Commercial Competition or disqualified and will not be eligible to participate.
13. If the animal is deemed ineligible for the competition, then the exhibitor/s of the cattle must make other arrangements.
14. All led cattle must be restrained by nose ring or nose grip
15. For the purpose of this competition Hormone Growth Promotants (HGPs) are not permitted.
16. The Competition will be conducted in TWO parts, hoof (live) and hook (carcass).
17. Stewards may use their discretion and refuse any entry to an animal deemed to be unfit for competition be weight, health or specifications

### **Carcase Judges**

- Jill Burgess
- Maddison Luke

### **Live Judges**

- Ben Toll ( St Johns College, Dubbo )
- Tayla Miller ( Blue Gene Cattle Company, Scone )



**SPECIALISING IN  
BEEF, PORK & VEAL**

*Established. 1965*



## **Rules and Regulations:**

- Live Judging - at Hawkesbury Showground, Cattle Lawn & Cattle Yards, Sunday 11<sup>th</sup> May starting with led cattle approx. 8.30am, then followed by unled classes.
- All cattle entered in Hoof and Hook competition must be on the grounds by 10.00pm Saturday Night
- Carcass presentation and a sausage sizzle with light refreshments will be held **Tuesday 20<sup>th</sup> May at 6.30pm** in the apex building at Hawkesbury Showground ( entry through gate 3 or 4 )

**ENTRIES CLOSE at 4.00pm on Monday 28<sup>th</sup> April 2025 - LATE ENTRIES WILL NOT BE ACCEPTED**

## **Entry Fee:**

Class - \$60.00

**2100 - Carcase jackpot competition** – this will be in place for the 2025 hoof/hook section.

To be eligible for the prize, exhibitors must nominate on the entry from which tag number/s are entered in the competition and pay the additional \$25.00 fee for each entry. Led and unled exhibits are eligible for inclusion into the competition. The jackpot Prize pool will be allocated to the highest scoring entrant on the carcass. The winner doesn't have to be the grand champion carcass. **REMEMBER YOU MUST BE IN IT TO WIN IT!!**

## **CLASSES and Prize money**

**Hoof – 1st \$25, 2nd \$15, 3rd \$10 & ribbons**

**Hook –1st \$25, 2nd \$15, 3rd \$10 & ribbons**

## Led

**2101-HH1 - Light Weight** - 360 – 400Kg live weight

**2102-HH2 - Middle Weight** - 401 – 440Kg live weight

**2103-HH3 - Heavy Weight** - 441 – 480Kg live weight

**2104-HH4 - Export** - 481 – 520kg live weight

## Unled

**2105-HH5 - Light Weight** - 360 – 400Kg live weight

**2106-HH6 - Middle Weight** - 401 – 440kg live weight

**2107-HH7 - Heavy Weight** - 441 – 480Kg live weight

**2108-HH8 - Export** - 481 - 520kg

## 2109- Pen of 2 Carcase Competition - Sponsored by J & C Adams Transport

- Free to enter
- Exhibitors nominate which 2 animals they believe are the best to represent them in the competition, by using tag numbers on your entry form, points from each will be combined on the carcase to give a total
- 

**Champion Pen of 2 Carcase** – ribbon & \$200

**Reserve Champion Pen of 2 carcase** – ribbon & \$100

## Market Specifications

<b>Light Weight</b>		<b>Middle Weight</b>		<b>Heavy Weight</b>		<b>Export</b>	
<b>Liveweight</b>	360-400kg	<b>Liveweight</b>	401-440kg	<b>Liveweight</b>	441-480kg	<b>Liveweight</b>	481-520kg
<b>Carcase Weight</b>	180-220kg	<b>Carcase weight</b>	220-260kg	<b>Carcase weight</b>	260-300kg	<b>Carcase Weight</b>	300-340kg
<b>P8 Rump Fat</b>	4-9mm	<b>P8 Rump Fat</b>	5-10mm	<b>P8 Rump Fat</b>	6-11mm	<b>P8 Rump Fat</b>	7-12mm
<b>10<sup>th</sup>/11<sup>th</sup> Rib Fat</b>	3-8mm	<b>10<sup>th</sup>/11<sup>th</sup> Rib Fat</b>	4-9mm	<b>10<sup>th</sup>/11<sup>th</sup> Rib Fat</b>	5-10mm	<b>10<sup>th</sup>/11<sup>th</sup> Rib Fat</b>	6-11mm

## **2110- Led Steer/Heifer Commercial Competition**

- Any commercial animal that is ineligible for stud/hoof and hook classes whether it be unregistered or out of weight limit/specifications
- Classes will be divided based on entries

**1<sup>st</sup> - \$25.00    2<sup>nd</sup> - \$15.00    3<sup>rd</sup> - \$10.00**

**Grand Champion on the hoof – ribbon & \$250.00**

**Grand Champion on the hook – ribbon & \$250.00**

**Champion School Exhibit on the Hoof - ribbon & \$100.00**

**Champion School Exhibit on the Hook – ribbon & \$100.00**

**Highest Yielding Carcase – ribbon & \$100.00**

**Champion Lightweight Led/unled – ribbon & \$50.00 Carcase**

**Reserve Champion Lightweight Led/unled – ribbon & \$25.00**

**Champion Middleweight Led/unled – ribbon & \$50.00**

**Reserve Champion Middleweight Led/unled – ribbon & \$25.00**

**Champion Heavyweight Led/unled – ribbon & \$50.00**

**Reserve Champion Heavyweight Led/unled – ribbon & \$25.00**

**Champion Export Led/unled - ribbon & \$50.00**

**Reserve Champion Led/unled - ribbon & \$25.00**

## **LED AND UNLED CLASSES COMBINE FOR CARCASE AWARDS**

**Champion Lightweight Carcase – ribbon & \$100.00**

**Reserve Champion Lightweight Carcase – ribbon & \$50.00**

**Champion Middleweight Carcase – ribbon & \$100.00**

**Reserve Champion Middleweight Carcase – ribbon & \$50.00**

**Champion Heavyweight Carcase – ribbon & \$100.00**

**Reserve Champion Heavyweight Carcase – ribbon & \$50.00**

**Champion Export Carcase – ribbon & \$100.00**

**Reserve Champion Export Carcase – ribbon & \$50.00**

# Inaugural Southern Steer Showcase

Sunday 11<sup>th</sup> May 2025

Judging – 11.00am

Auction – 1.00pm

Welcome to the 2025 Inaugural HDAA Southern Steer Showcase, this event was an initiative by the cattle committee to bring something new and exciting to the show that hasn't been done before. Providing an opportunity for schools to purchase steers in a public live auction held at a local country show as well providing vendors the ability to sell and support the youth of our industry coming through. Exhibits will be judged live and awarded ribbons and then will be auctioned through an open cry format with online support. Below is a brief outline and description of the event, supplying information for vendors and purchasers. For anyone interested they can email or call Jordan to express their interest.

**Please note: Expressions of interest to be received first to see if event will run or not**

Jordan Ridge - 0434 219 871 – [mysticridgelimousins@hotmail.com](mailto:mysticridgelimousins@hotmail.com)

## **Brief Outline :**

- 250kg – 500kg
- Led and Unled Sections
- Purebred and Crossbreds Eligible
- Open to all exhibitors to sell
- Open to all buyers to purchase
- Sale to be conducted and settled by Nutrien Moss Vale / Goulburn ( John Palmer and Peter Godbolt )
- Agent reserves the right to refuse entry to exhibit that they deem is unfit for sale
- Open cry auction interfaced with Auctions Plus online selling platform
- \$125.00 entry fee ( paid to HDAA show society )
- **All Cattle must be pesti virus tested negative and results must be submitted with entries along with a health declaration**
- National Vendor Declaration to be supplied on arrival to showground
- All exhibits to be on ground by 10.00pm Saturday
- Expressions of interest close 14/2/25 by email to Jordan, which if event is to run – entry forms will be emailed out on Monday 17/2/25
- Entries close 28/2/25 with a photo supplied in PDF or JPEG format by email
- A hard copy catalogue as well as auctions plus catalogue will then be completed and available
- If you wish to supply a short video it must be done so by 31/3/25
- Commission of 6% rebate to selling agent
- Commission of 2% rebate averaged to outside agents
- A floor price will be set by the selling agent, in which this will be the minimum each lot can sell for
- Champion Led and Unled will each receive \$250.00 prize money
- Reserve Champion Led and Unled will each receive \$125.00 prize money
- Grand Champion Overall will receive \$750.00 prize money
- There will be a special cash prize of \$1000.00 given to a purchaser from the sale that exhibits the highest scoring carcass from an eligible competition within 12 mths ( 2025 Brisbane Royal, 2025 Melbourne Royal, 2025 Upper Hunter Beef Bonanza, 2026 Canberra Royal and 2026 Sydney Royal )
- Purchaser to arrange transport with carrier or their own for lots to be picked up on Monday 12/5/25

# HAWKESBURY DISTRICT AGRICULTURAL ASSOCIATION

## *Annual Show*

### Interbreed Junior Bull Jackpot General Rules

- ★ \$30.00 per Entry ( No restriction on the number of entries)
- ★ Must be entered in general classes
- ★ Any breed Bull under 20 months
- ★ Entry fee pool will be distributed as Prizemoney



**CHAMPION JUNIOR BULL JACKPOT  
RESERVE CHAMPION JUNIOR BULL JACKPOT**



**2025**

ENTRIES ONLINE AT : [showday.online](http://showday.online)

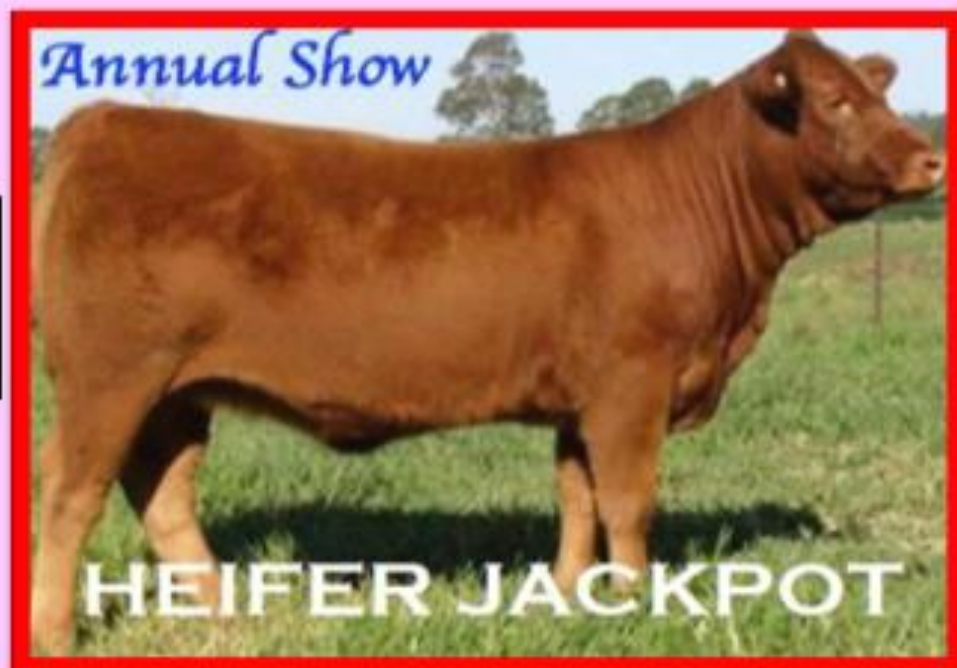
close Friday 28th April 2025 by 4pm.

ENTRIES CLOSE BY POST: at the showground office by  
Friday 28th April 2025 by 4pm.



# HAWKESBURY DISTRICT AGRICULTURAL ASSOCIATION

# 2025



**FRIDAY  
9<sup>th</sup> May**

Judging  
commences at  
6.30pm

## Interbreed Junior Heifer Jackpot General Rules

- ★ \$30.00 per Entry ( No restriction on the number of entries)
- ★ Must be entered in general classes
- ★ Any breed Heifer under 20 months
- ★ Entry fee pool will be distributed as Prizemoney

**CHAMPION JUNIOR HEIFER JACKPOT  
RESERVE CHAMPION JUNIOR HEIFER JACKPOT**

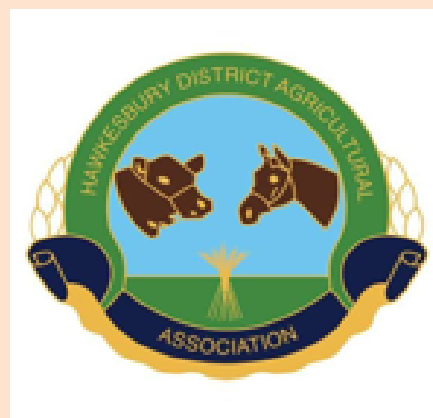
ENTRIES ONLINE AT : [showday.online](https://showday.online) close Friday 28th April 2025 by 4pm.

ENTRIES CLOSE BY POST: at the showground office by Friday 28<sup>th</sup> April 2025 by 4pm.

# HAWKESBURY DISTRICT AGRICULTURAL ASSOCIATION

## TEAM FITTING CHALLENGE

Friday 9<sup>th</sup> May 2025  
commencing at 3.30pm



### General Rules

- \* \$15.00 per Entry per Team
- \* Must be ready in Chute with Animal prior to 4.30pm
- \* Own clipping chute required
- \* Team of 3 – Ages 8 -30 years
- \* Minimum one Junior (under 18yrs) per Team
- \* 30 Minutes to prepare Animal ready for Show Ring with Leather Halter and Show Cane

**CHAMPION FITTING TEAM**  
**RESERVE CHAMPION FITTING TEAM**



ENTRIES ONLINE AT : [showday.online](https://www.showday.online)

close Friday 28<sup>th</sup> April 2025 by 4pm.

ENTRIES CLOSE BY POST: at the showground office

by Friday 28<sup>th</sup> April 2025 by 4pm.



# **HAWKESBURY SHOW 9 – 11 May 2025**

**“Where the country meets the city”**

## **Cattle Fitting Challenge** **Friday 9<sup>th</sup> May at 3.30PM**

Kindly sponsored by Daryl Holder – The Cattle Shop

### **RULES AND ENTRY FORM**

1. \$15.00 per Entry per Team
2. 4.30pm start, must be ready in Chute with Animal prior to 4.30pm
3. Own clipping chute required
4. Team of 3 – Ages 8 -30 years
5. Minimum one Junior (under 18yrs) per Team
6. Animal must be entered in general classes including steer, bull, heifer or cow
7. 30 Minutes to prepare Animal ready for Show Ring with Leather Halter and Show Cane
8. Entries close online or by post on Friday 28<sup>th</sup> April at 4.00pm

#### **ENTRY FORM**

<b>TEAM NAME:</b>			
<b>TEAM MEMBERS NAME:</b>			
<b>TEAM MEMBERS AGE:</b>			
<b>CONTACT PHONE NUMBER:</b>			
<b>COMPETITOR SIGNATURE:</b>			<b>DATE:</b>

THE HDAA ARE PROUD TO ANNOUNCE THE 2025

# CHARITY STEER



KINDLY PREPARED AND DONATED BY WESTERN  
SYDNEY UNIVERSITY

ALL PROCEEDS WILL BE DONATED TO PINK FINNS.

# CHARITY STEER

Kindly prepared and donated by  
Western Sydney University.

All proceeds will be donated to Pink Finns

The Charity Steer will be auctioned off in the Main  
Arena on

<b>FRIDAY</b>	<b>9TH MAY</b>	<b>AT 7 PM</b>
---------------	--------------------	----------------

Prior Registration is required to bid.  
Bidders can register prior to the Show or from 4pm  
to 6pm beside the Grandstand on the day of the  
auction.

Payment must be made to the Hawkesbury District  
Agricultural Association before the completion of the  
2025 Hawkesbury Show.

The animal will be processed and packaged at a butcher  
of the successful bidders choosing.

For more information, please contact  
Chief Steward Jordan Ridge on 04 3421 9871 or  
[mysticridgelimousins@hotmail.com](mailto:mysticridgelimousins@hotmail.com)

or

The Show Office- (02) 4577 3591  
[hdaa@hawkesbury.com.au](mailto:hdaa@hawkesbury.com.au)  
To register please contact the show Office

# BEEF CATTLE JUNIOR JUDGING – FRIDAY 9<sup>th</sup> May 2025

**select Class below.**

Pre- entry online or via mail only.

NB - Name, Age, Date of Birth & Postal Address MUST be recorded on the entry form.

Class	Description of Class	Mark classes you wish to	Office use
2201	Juniors under 15 years		
	<b>CHAMPION Junior in BEEF CATTLE JUDGING COMP.</b>		
	<b>RESERVE CHAMPION Junior in BEEF CATTLE JUDGING COMP.</b>		
2202	Juniors 15 years to 17 years		
	<b>CHAMPION Junior in BEEF CATTLE JUDGING COMP.</b>		
	<b>RESERVE CHAMPION Junior in BEEF CATTLE JUDGING COMP.</b>		
2203	Seniors 18 years and under 25 years		
	<b>CHAMPION Senior in BEEF CATTLE JUDGING COMP.</b>		
	<b>RESERVE CHAMPION Senior in BEEF CATTLE JUDGING COMP.</b>		

**GRAND CHAMPION JUNIOR JUDGE – the winner will receive free entry to the 2025 Limousin Youth Show**

## Junior Parader Classes (under 25 years) - SATURDAY 10th May 2025

Pre- entry inline or via mail only.

Name & age of competitor, school & HOME address MUST be stated on the entry form.

Entrants **MUST WEAR BOOTS** and Dust Coat or Breed Vest.

Competitors to be judged on presentation of themselves, their animals, ring craft and the knowledge of their animals

**The "Risk Warning" Indemnity/Waiver document will need to be filled out by all participating in this event.**

**This form will need to be handed in on the day of the Show and competitors will need to show their Risk Waiver wristband to enter the ring. A risk warning form can be found further down on this document**

Paraders competition will commence after the conclusion of the Grand parade. **ENTRY FEE \$5.00**

**Paraders – select Class below (Prizes provided by The Cattle Shop)**

Class	Description of Class	Mark classes you wish to enter	Office use
2210	Competitor aged between 6 and under 12 years		
2211	Competitor aged 12 years		
2212	Competitor aged 13 years		
	<b>CHAMPION Peewee in JUNIOR PARADER COMP.</b>		
	<b>Sponsored by Sydney Regional Hereford Group - \$10.00</b>		
	<b>RESERVE CHAMPION Peewee in JUNIOR PARADER COMP.</b>		
2213	Competitor aged 14 years		
2214	Competitor aged 15 years		
2215	Competitor aged 16 years		
	<b>CHAMPION Intermediate in JUNIOR PARADER COMP.</b>		
	<b>Sponsored by Sydney Regional Hereford Group - \$10.00</b>		
	<b>RESERVE CHAMPION Intermediate in JUNIOR PARADER COMP.</b>		
2216	Competitor aged 17 years		
2217	Competitor aged 18 years		
2218	Competitor aged between 19 and under 25 years		
	<b>CHAMPION Senior in JUNIOR PARADER COMP.</b>		
	<b>Sponsored by Sydney Regional Hereford Group - \$10.00</b>		
	<b>RESERVE CHAMPION Senior in JUNIOR PARADER COMP.</b>		
	<b>GRAND CHAMPION JUNIOR PARADER</b>		
	<b>Sponsored by Sydney Regional Hereford Group - \$20.00</b>		

## Paraders & Junior Judging Entry Form

Name.....

Home Address.....

..... Postcode.....

Contact Phone..... Email.....

DOB..... Age as of the **1<sup>st</sup> May 2025\***.....

**Do you require a ballot animal ?      YES      NO      ( PLEASE CIRCLE )**

### **CHECKLIST:**

#### **1. Entering Classes via post:**

- Payment via cheque (payable to: Hawkesbury District Agricultural Association), cash [only if in person] or credit card details
- Photo copy & Post to The Secretary, P O Box 382, Richmond 2753
- Complete and include a "Risk Waiver" form

#### **1. Entering Classes Online**

- Payment via credit card only
- Log onto [Showday.online](http://Showday.online) and follow the instructions
- Complete a "Risk Waiver" form and present to the cattle office on the morning of the event

#### **1. NO ENTRIES will be taken on the day of the Show:**



**HEREFORDS**  
Australia  
**Sydney**  
**Regional Group**





# MULTI PURPOSE INDIVIDUAL WAIVER

AGRICULTURAL SOCIETIES COUNCIL OF NEW SOUTH WALES LIMITED (T/A AgShows NSW)

THIS DOCUMENT IS A NO DUTY OF CARE RISK WARNING DOCUMENT

THIS DOCUMENT A WAIVER OF DUTY OF CARE

Do not complete "Event" details if this document only applies to use of facilities other than for an Event.

Event Name (subsequently referred to as "the Event"): .....

Event Date: .....

Participant's Name: .....

Participant's Date of Birth: .....

Participant's Address: .....

Participant Contact Number: .....

Participant Email: .....

## Section A - Supplier's statements about risk and duty of care

Agricultural Societies Council of New South Wales Limited and

(Name of Show) ..... (together the Suppliers) advise as set out below.

The handling of animals is a dangerous recreational activity as animals can act in a sudden and unpredictable way, especially when frightened or hurt.

Participation (including passive participation) in animal handling and/or physical competitions and/or Events at an agricultural show and/or use of the Suppliers' facilities contain elements of risk, both obvious and inherent.

Physical competitions and activities, Events and use of the Suppliers' facilities are all dangerous recreational activities. This document is a risk warning for the purpose of section 5M of the Civil Liability Act NSW 2002. This risk warning is given by or on behalf of the Suppliers.

This document acts as an exclusion of liability under Part 1A Division 5 of the Civil Liability Act NSW 2002 if the services supplied by the Suppliers are supplied without reasonable care and skill.

## Section B - Participant's acknowledgements

By signing this document I acknowledge that:

1. Participation in the Event and/or use of the Suppliers' facilities is a recreational service for the purposes of section 139A of the Australian Competition and Consumer Act (Cth) 2010 and a recreational activity for the purposes of section 5K of the Civil Liability Act (NSW) 2002.
2. I participate in the Event and/or use of the Suppliers' facilities at my own risk.
3. Participation in the Event and/or use of the Suppliers' facilities is a hazardous activity and involves a significant risk of physical harm and may result in injury, loss, damage or death to me and others.
4. Participation in the Event and/or use of the Suppliers' facilities requires certain skills and experience. I declare that I have sufficient skills and experience to be able to safely and properly participate in the Event and/or use the Suppliers' facilities.
5. Animals can act in sudden and unpredictable ways, especially if frightened or hurt, or if exposed to loud or unfamiliar noises.
6. The Event will be held in close proximity to rides and large groups of people and there may be loud and unfamiliar noises which can frighten animals used in the Event.
7. If the Event is held outdoors, there are risks to me as a result of the weather conditions, including either extreme hot or cold weather, rain or wind.
8. Insects or other animals may cause animals used in the Event to become frightened and act in an unpredictable way.
9. In handling animals, there is a risk of suffering injury including injuries caused by the animals.
10. I am responsible for ensuring that I have and will wear equipment suitable for my safety in my participation of the Event and/or in using the Suppliers' facilities.
11. I am responsible for the condition of any tools and equipment and ensuring that they are appropriate for the Event and/or in using the Suppliers' facilities.

# MULTI PURPOSE INDIVIDUAL WAIVER

12. I use the Suppliers' facilities, including for the Event entirely at my own risk, as I find them and with the prior acceptance of the risk of possible danger to me, both obvious and inherent.
13. At the time of participating in the Event and/or in using the Suppliers' facilities, I will not to any degree be under the influence of alcohol or illicit drugs.
14. I will not consume any alcohol or illicit drugs while participating in the Event and/or in using the Suppliers' facilities and agree that such use may result in my being excluded from the Event and/or from using the Suppliers' facilities with no entitlement to any refund of money paid to the Suppliers for entry.
15. I agree to be bound by the rules and guidelines of the Suppliers as varied from time to time.

## Section C - Participant's acceptance of risk & no duty of care & waiver of rights

1. I acknowledge and agree that my participation in the Event and any associated activities and/or my use of the Supplier's facilities is dangerous and may have obvious and/or inherent risks as a result of which personal injury (and sometimes death) may occur.
2. I acknowledge that my participation in the Event and any associated activities and/or my use of the Supplier's facilities carry with them a significant risk of physical harm.
3. I accept and assume all risks of personal injury or death in anyway whatsoever arising from my participation in the Event and any associated activities and/or my use of the Supplier's facilities.
4. I waive my individual right to sue the Suppliers for all claims I may have for such personal injury or death against the Suppliers in any way whatsoever arising from or in connection with my participation in the Event and any associated activities and/or my use of the Supplier's facilities.
5. If I suffer personal injury or death while participating in the Event and/or from my use of the Supplier's facilities, I will not hold the Suppliers, their employees or agents legally responsible for any personal injury or death I suffer.
6. I will not sue the Suppliers, their employees or agents for any claims, actions, costs, damages or liability.
7. I release the Suppliers and their employees from legal responsibility for the services I have been provided and/or activity I have participated in, including the Event.

## Section D - Signature

Where the participant is 18 years of age or over:

I agree that I have read and understood this waiver prior to signing it.

I acknowledge that the Suppliers have permitted me to participate in the activity the subject of this document in reliance on the matters acknowledged by me and the representations I have made in this document.

I agree that this waiver is governed in all respects by and interpreted in accordance with the laws of New South Wales.

I agree that by inputting my name in the signature box and ticking the box beside my name, everything in this document is binding on me and my heirs, next of kin, executors and administrators.

Signature: .....  Dated: .....

Where participant is UNDER 18 years of age (to be completed by a parent or guardian):

Participant's Date of Birth .....

I, ..... (insert parent/guardian name),

being a parent or legal guardian of the above named participant, hereby consent to my child using the Suppliers' facilities and/or participating in the Event.

I confirm that I have read and understood and explained to the participant this waiver prior to signing it.

I acknowledge that the Suppliers have permitted the participant to participate in the activity the subject of this document in reliance on the matters acknowledged by me and the representations that I have made in this document.

I agree that this waiver is governed in all respects by and interpreted in accordance with the laws of New South Wales.

I agree that by inputting my name in the signature box and ticking the box beside my name, everything in this document is binding on me and my heirs, next of kin, executors and administrators.

Signature: .....  Dated: .....